

# 2, 3, 4 BED & TRIPLEX PENTHOUSES FL-10 BLOCK-2, CLIFTON.

## NEAR BY AMENITIES



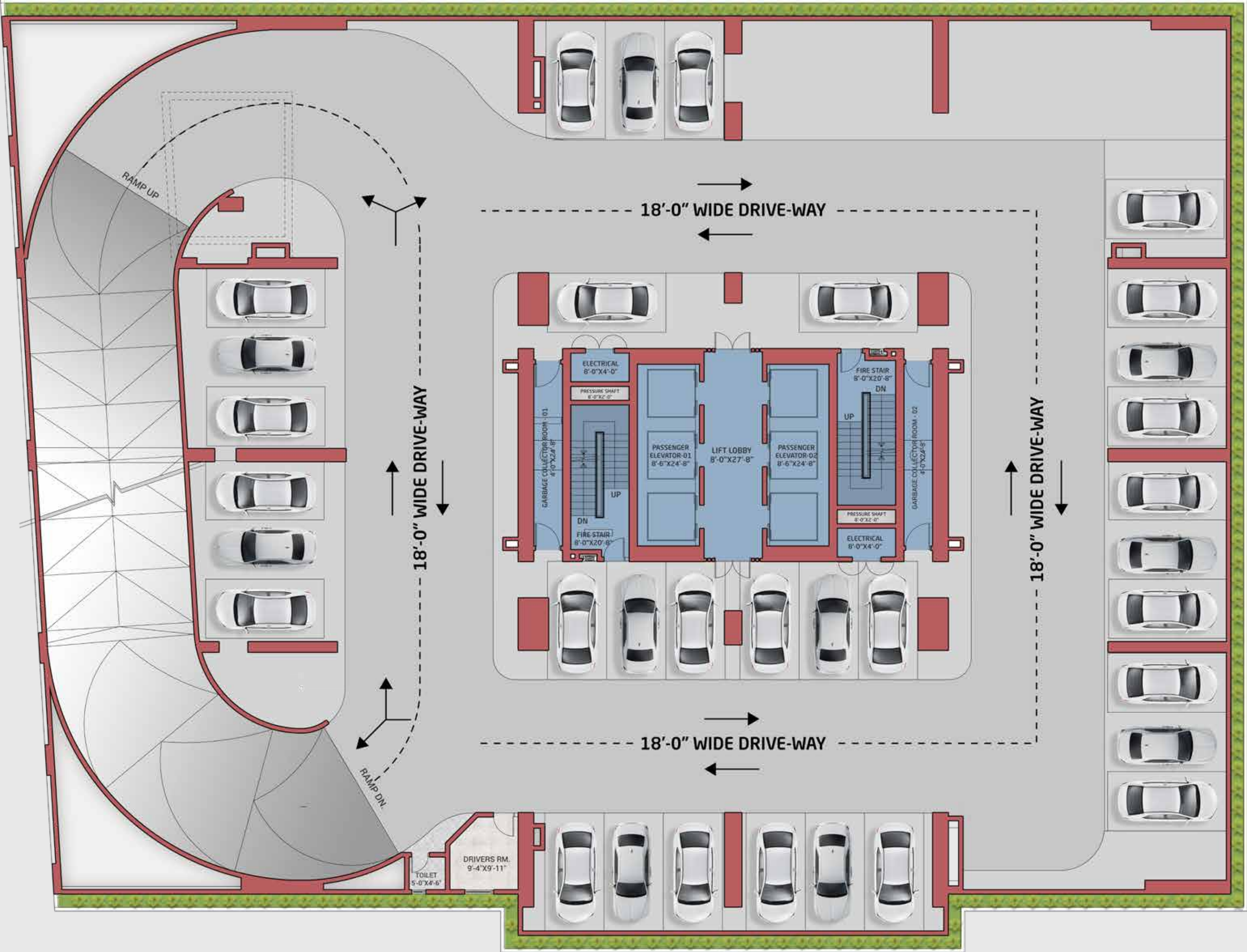




GROUND FLOOR







**1<sup>ST</sup> TO 11<sup>TH</sup> FLOOR PLAN**  
**TOTAL 398 CARS**











**PARKING**

**2BED  
APARTMENTS**

**4BED  
APARTMENTS**

**PODIUM  
FLOOR**

**3BED  
APARTMENTS**

**TRIPLEX  
PENTHOUSES**

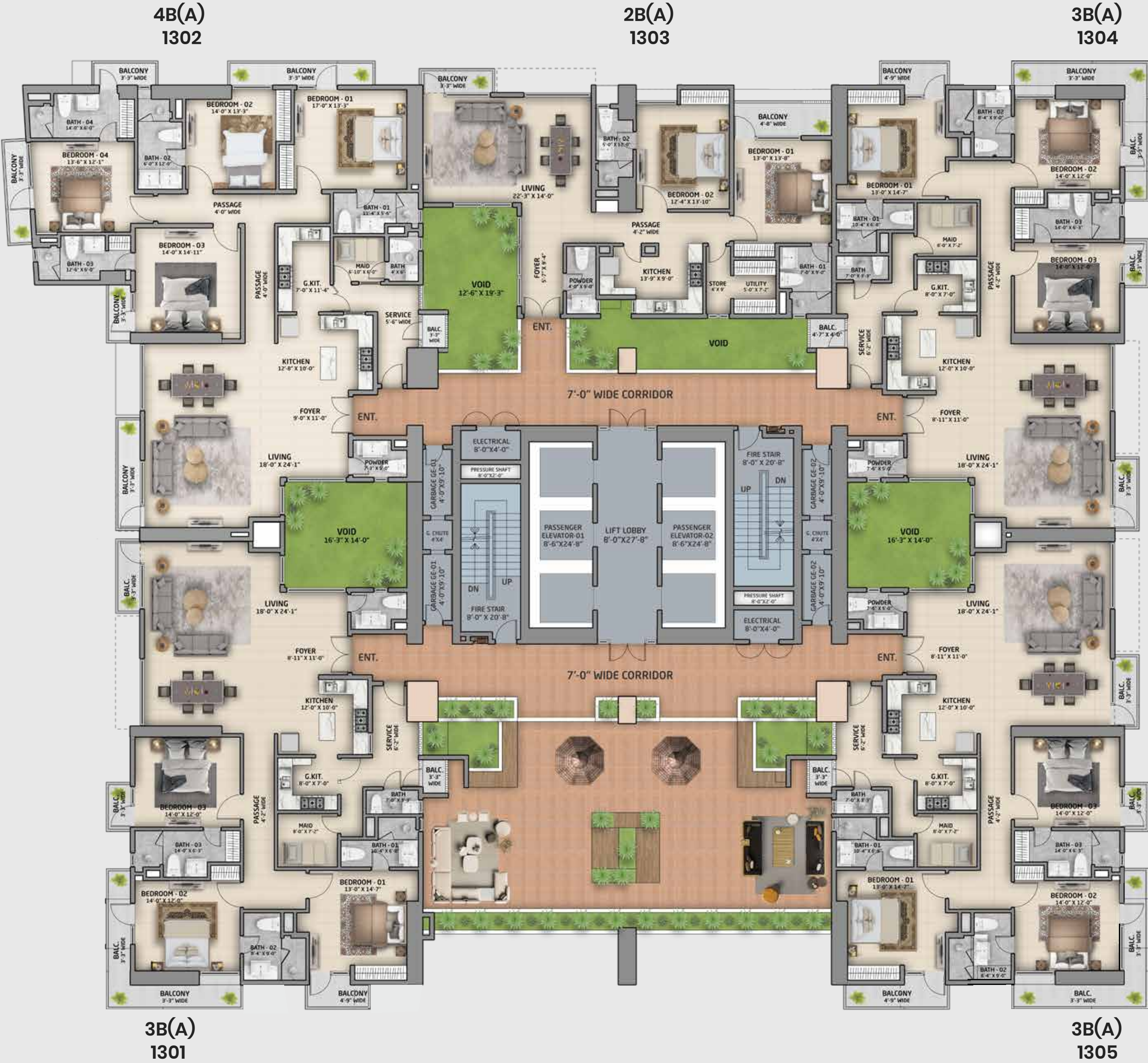




**12<sup>TH</sup> FLOOR PLAN**  
RECREATION



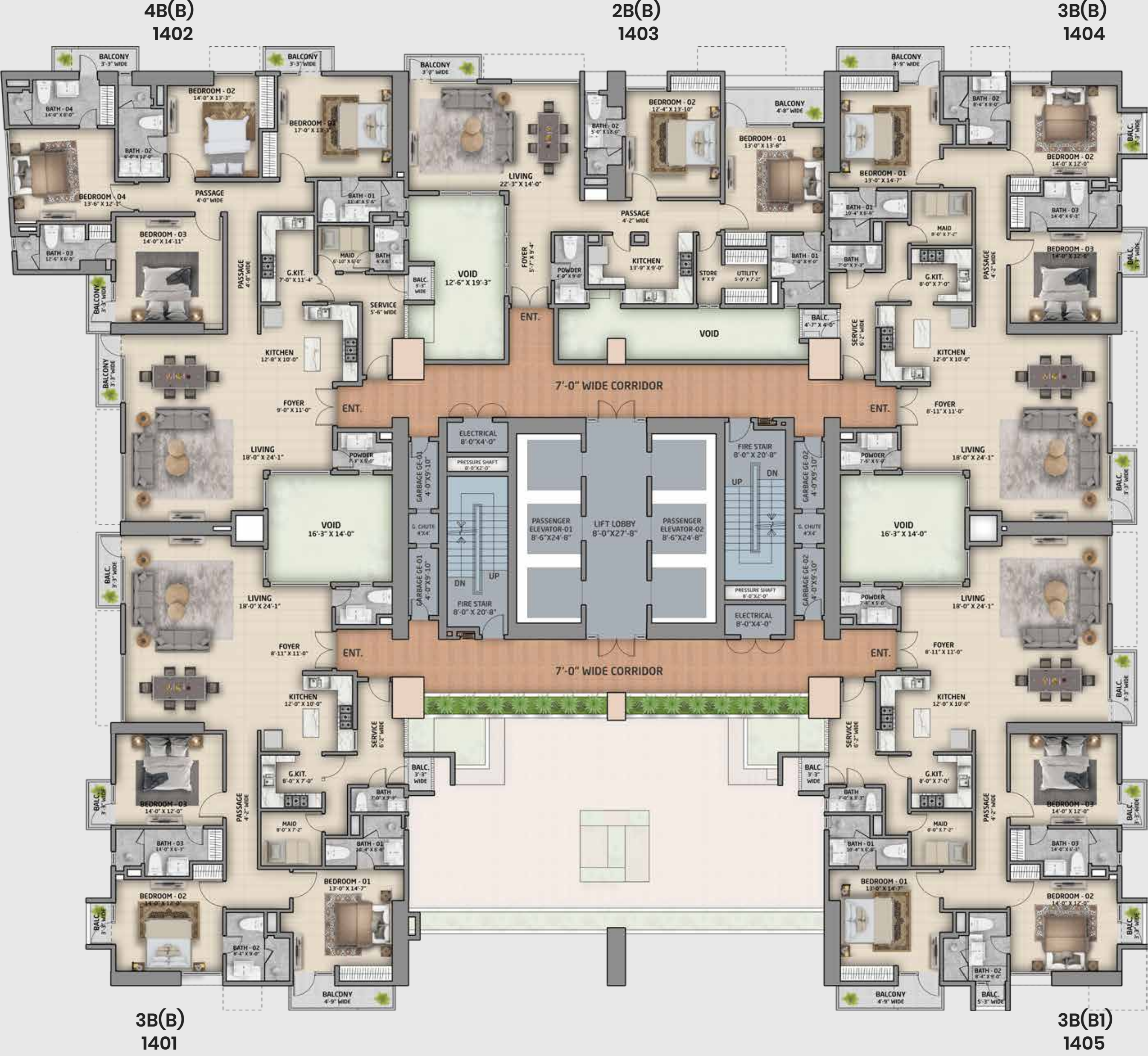




**13<sup>TH</sup>, 21<sup>ST</sup>, 29<sup>TH</sup>, 38<sup>TH</sup>**  
**TYPICAL FLOOR PLAN WITH PODIUM**  
NUMBER OF APARTMENTS: 3 (3 BED) / 1 (4 BED) / 1 (2 BED)



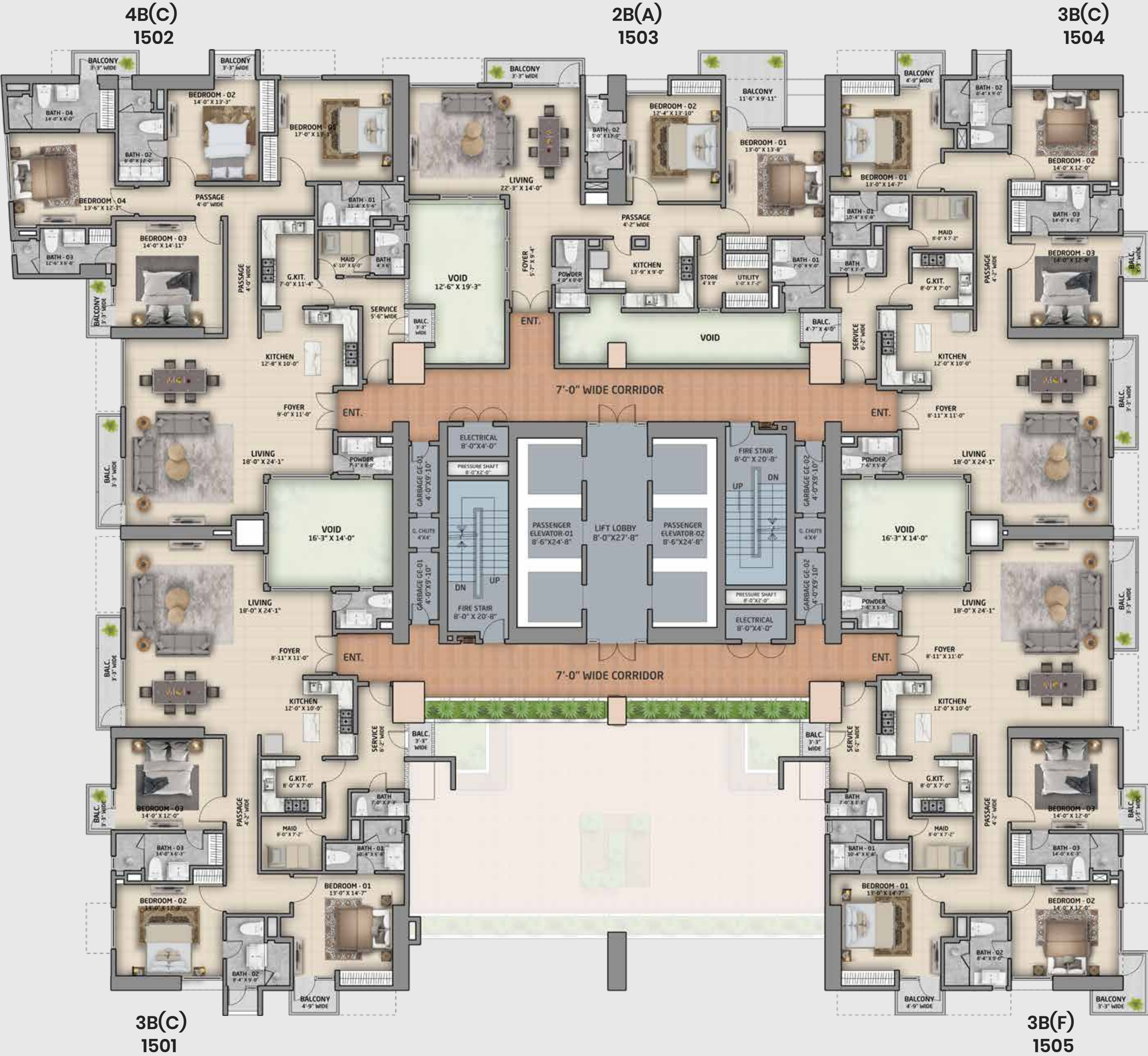




**14<sup>TH</sup>, 22<sup>ND</sup>, 30<sup>TH</sup>, 39<sup>TH</sup>**  
**TYPICAL FLOOR PLAN**  
NUMBER OF APARTMENTS: 3 (3 BED) / 1 (4 BED) / 1 (2 BED)





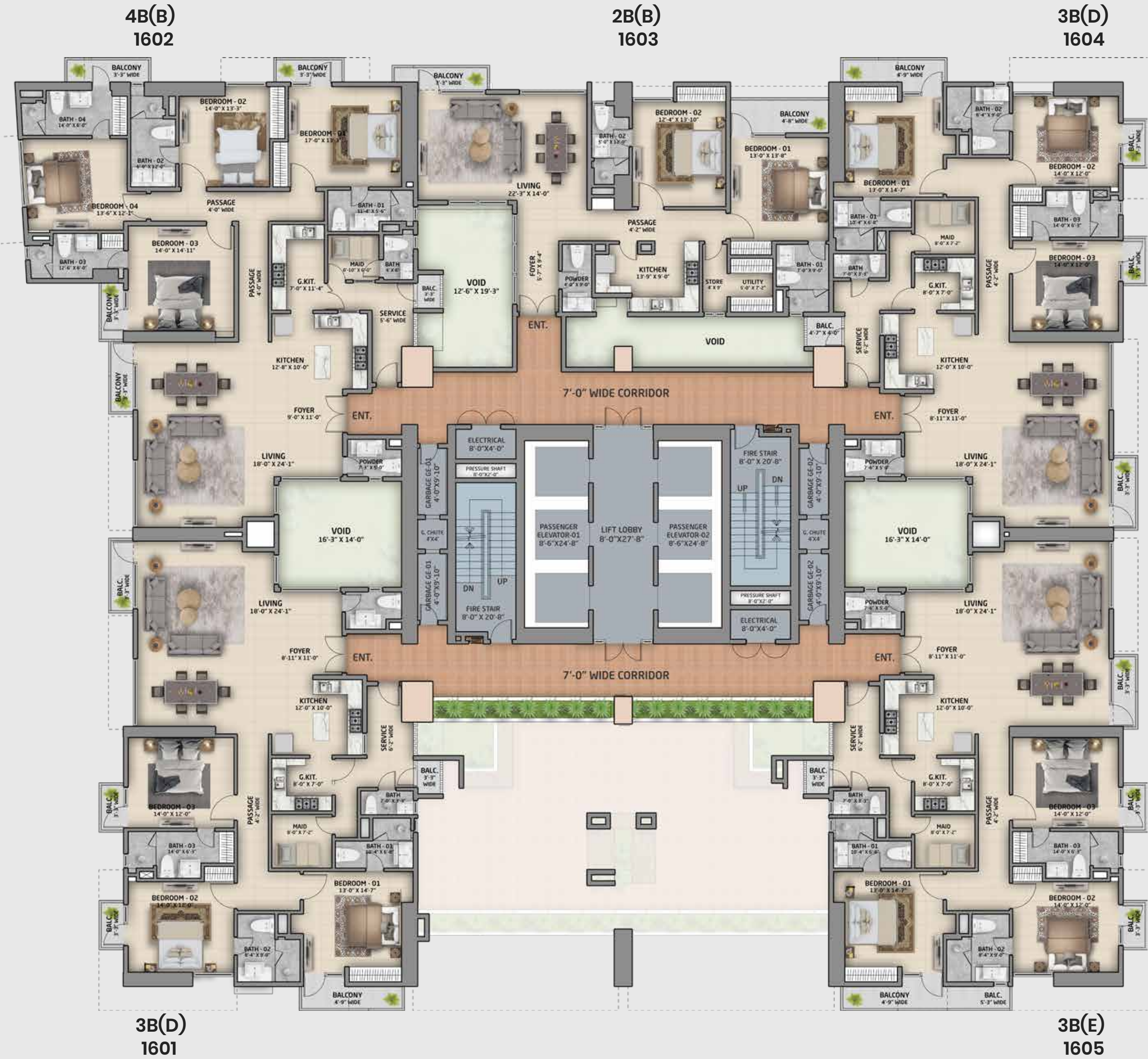


**15<sup>TH</sup>, 23<sup>RD</sup>, 31<sup>ST</sup>**  
**TYPICAL FLOOR PLAN**

NUMBER OF APARTMENTS: 3 (3 BED) / 1 (4 BED) / 1 (2 BED)





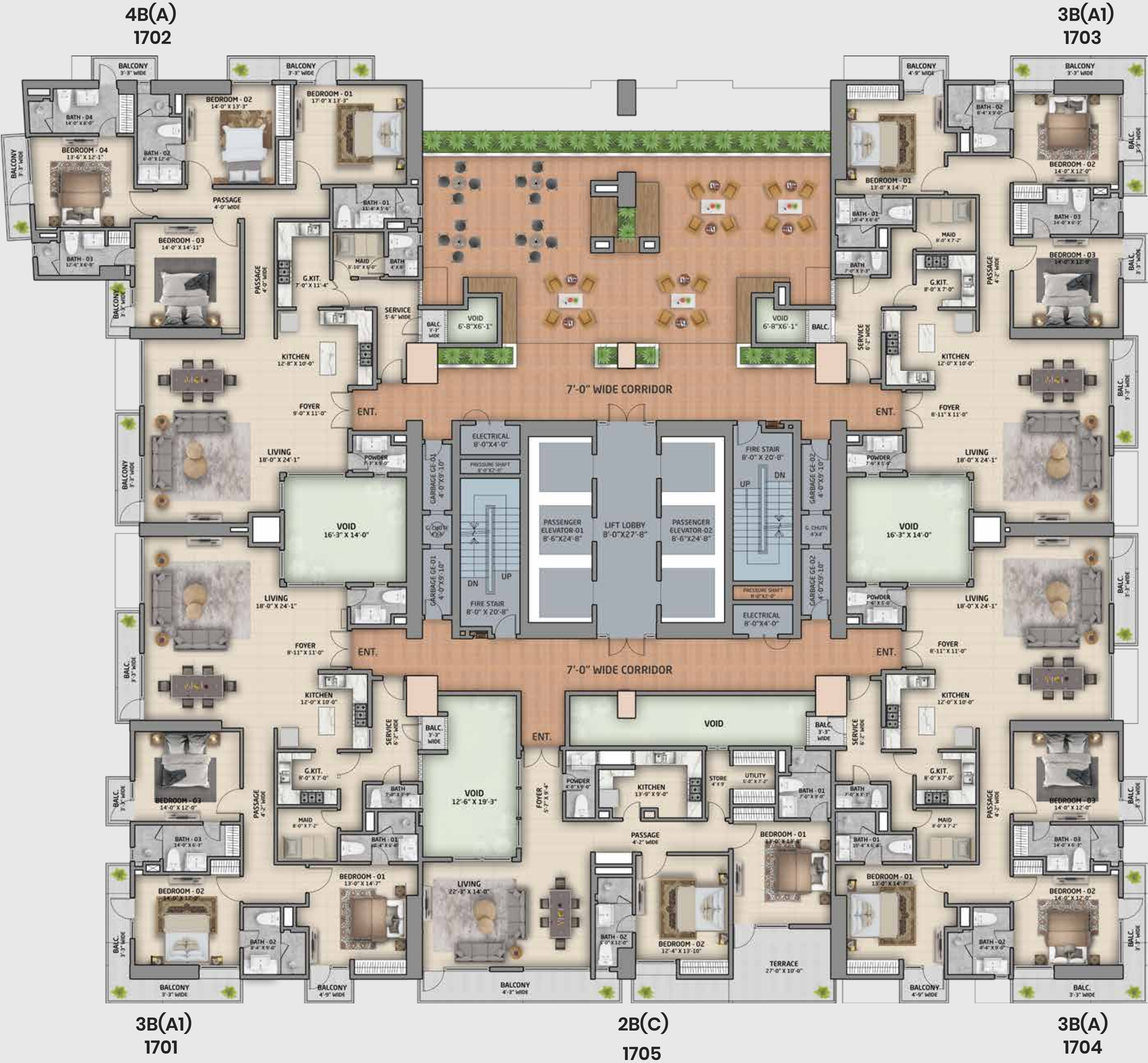


**16<sup>TH</sup>, 24<sup>TH</sup>, 32<sup>ND</sup>**  
**TYPICAL FLOOR PLAN**

NUMBER OF APARTMENTS: 3 (3 BED) / 1 (4 BED) / 1 (2 BED)







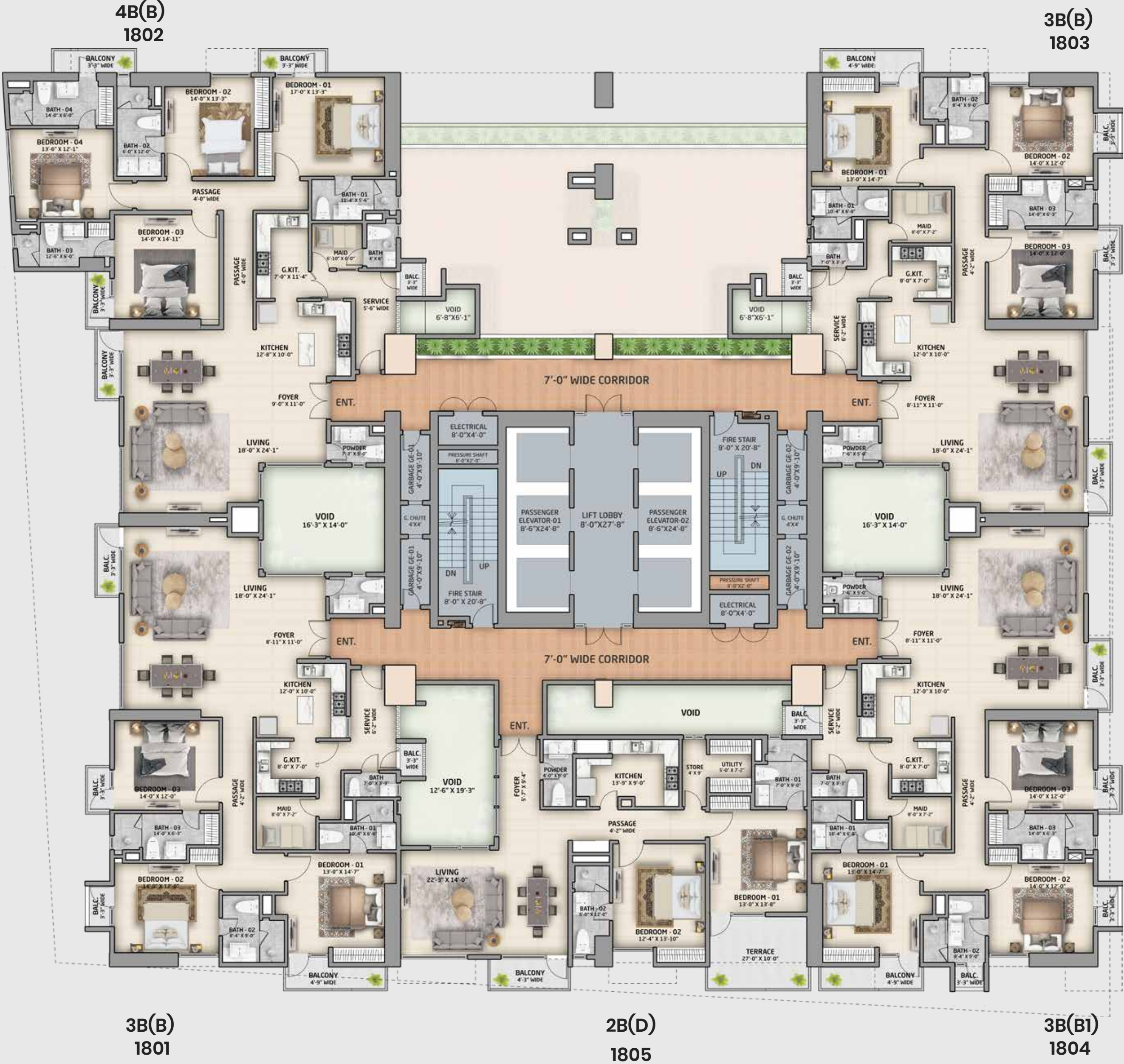
17<sup>TH</sup>, 25<sup>TH</sup>, 33<sup>RD</sup>, 40<sup>TH</sup>

TYPICAL FLOOR PLAN WITH PODIUM

NUMBER OF APARTMENTS: 3 (3 BED) / 1 (4 BED) / 1 (2 BED)





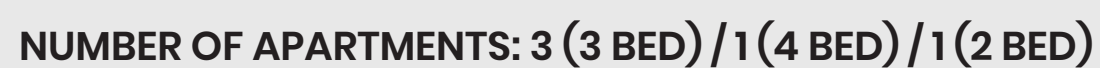


**18<sup>TH</sup>, 26<sup>TH</sup>, 34<sup>TH</sup>, 41<sup>ST</sup>**  
**TYPICAL FLOOR PLAN**

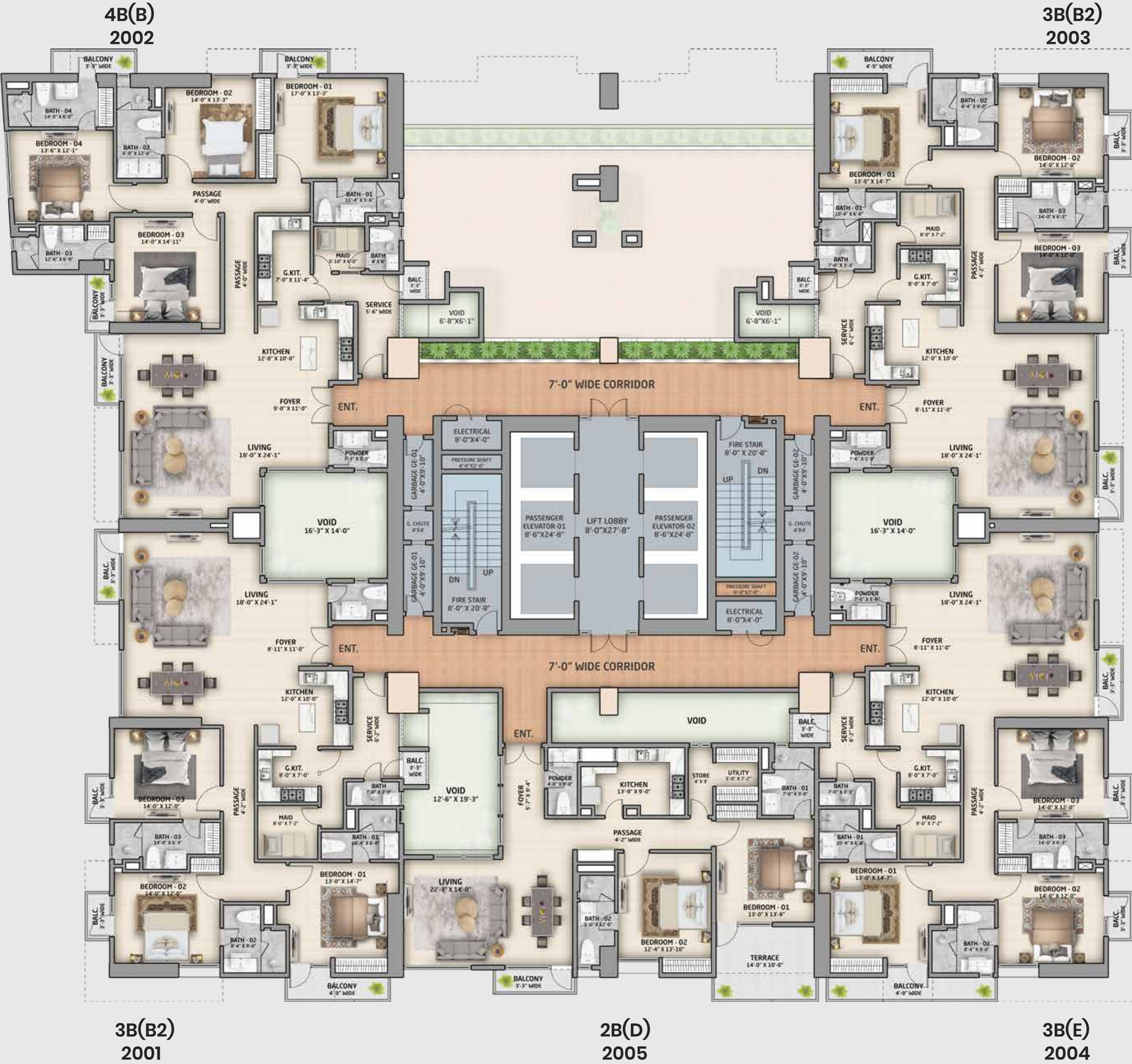
NUMBER OF APARTMENTS: 3 (3 BED) / 1 (4 BED) / 1 (2 BED)









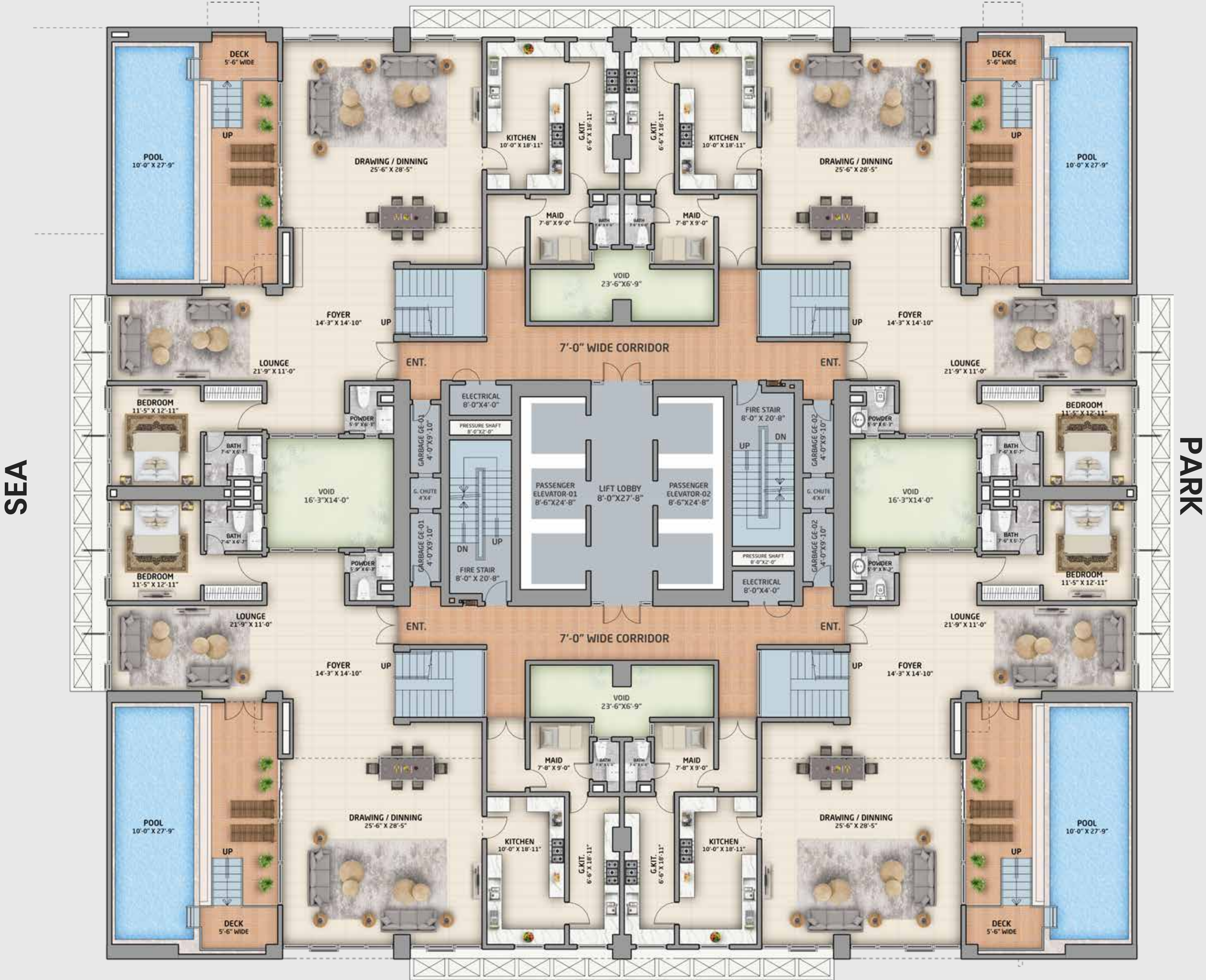


20<sup>TH</sup>, 28<sup>TH</sup>, 36<sup>TH</sup>  
TYPICAL FLOOR PLAN

NUMBER OF APARTMENTS: 3 (3 BED) / 1 (4 BED) / 1 (2 BED)



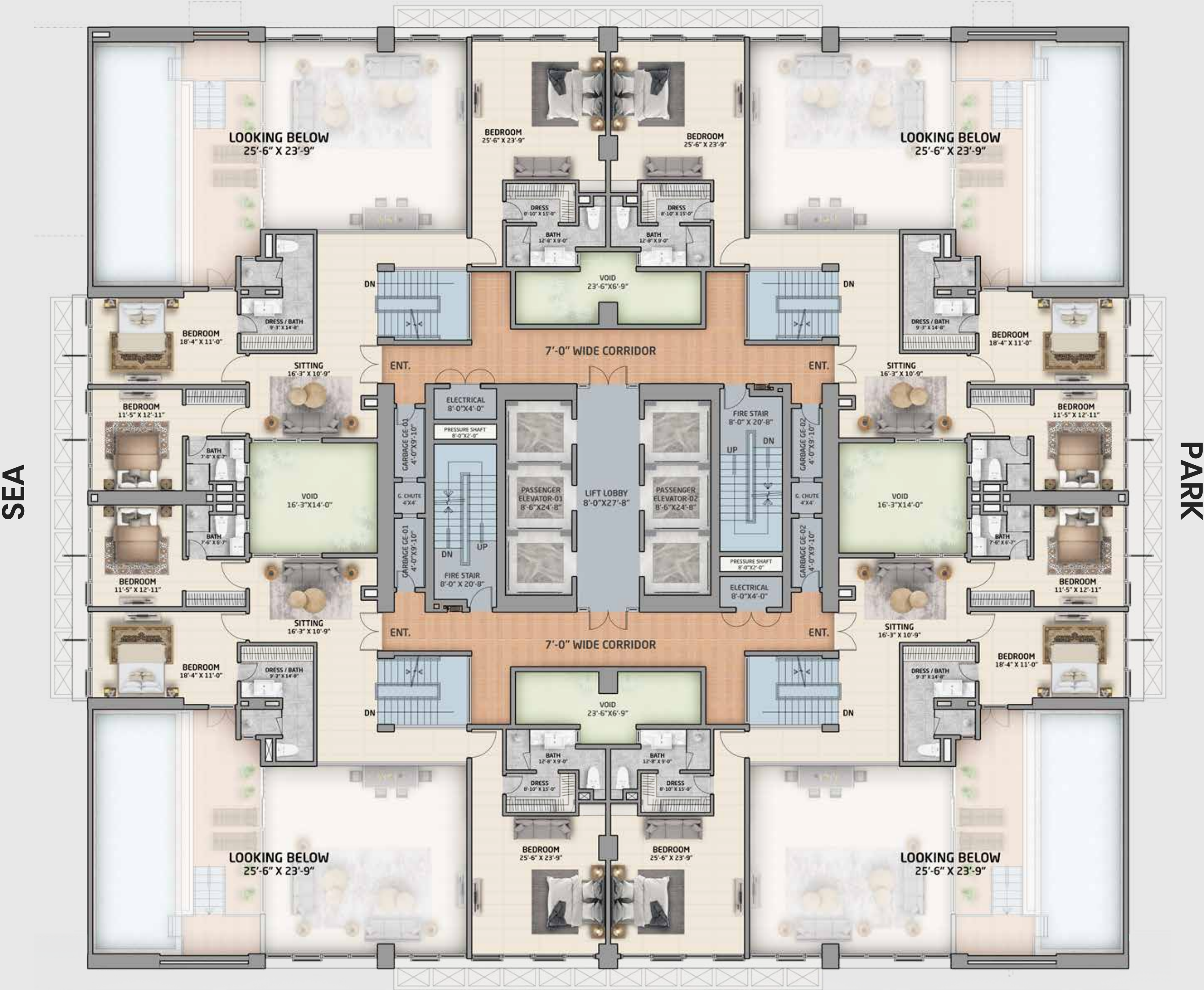




**43<sup>RD</sup>, 46<sup>TH</sup>, 49<sup>TH</sup>**  
**TYPICAL FLOOR PLAN**  
NUMBER OF APARTMENTS: 4 TRIPLEX



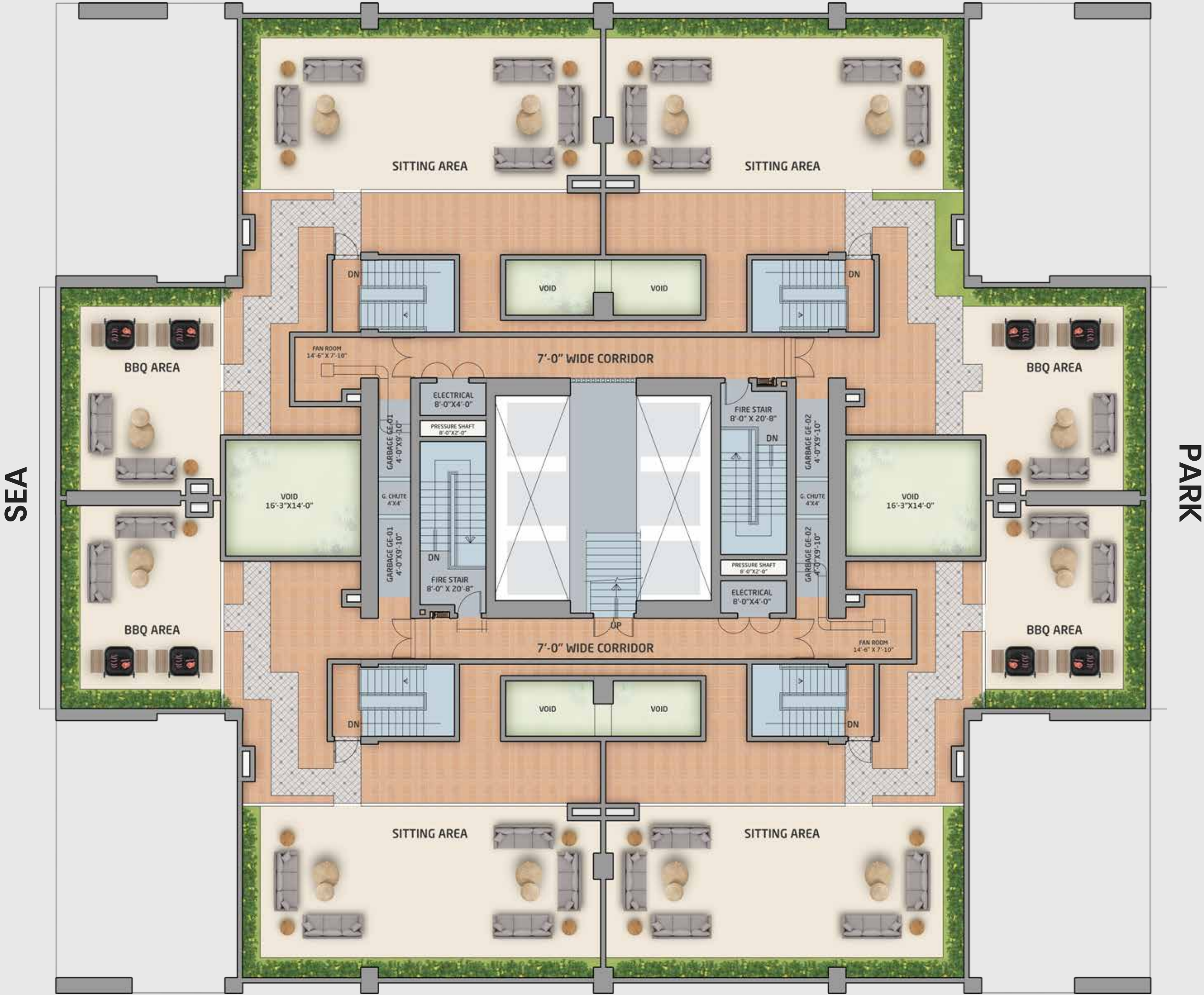




**44<sup>TH</sup>, 47<sup>TH</sup>, 50<sup>TH</sup>**  
**TYPICAL FLOOR PLAN**  
NUMBER OF APARTMENTS: 4 TRIPLEX







**45<sup>TH</sup>, 48<sup>TH</sup>, 51<sup>ST</sup>**  
**TYPICAL FLOOR PLAN**  
NUMBER OF APARTMENTS: 4 TRIPLEX







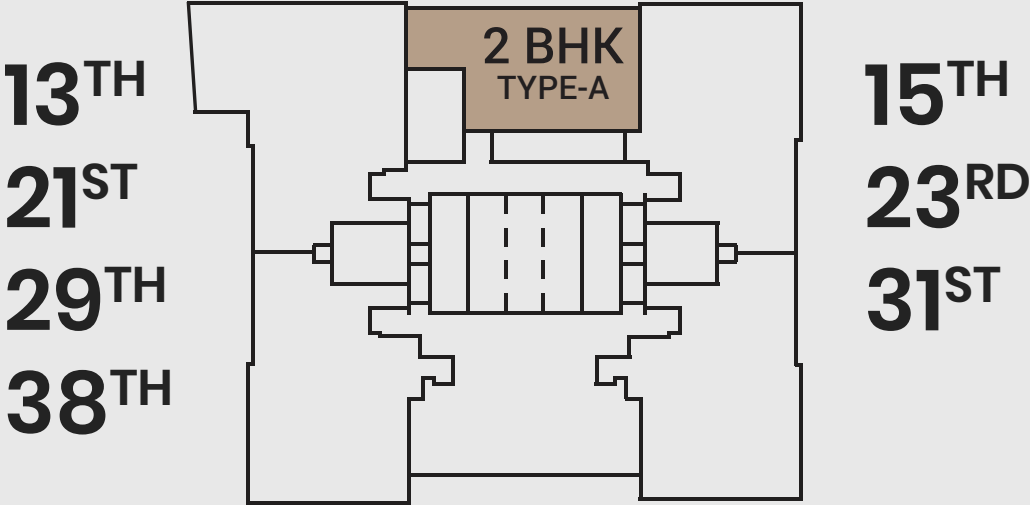


2 BEDROOM APARTMENT

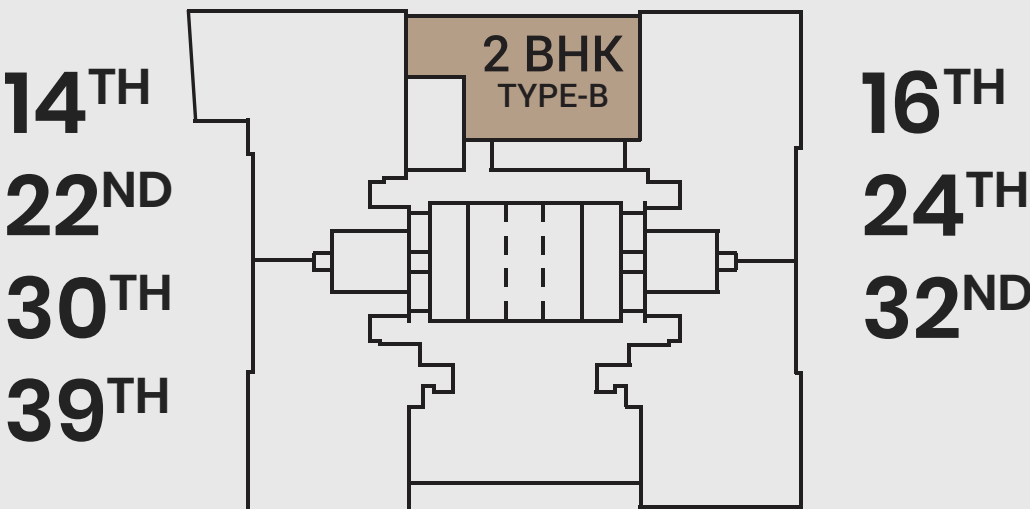
13<sup>TH</sup> TO 42<sup>ND</sup>



2 BEDROOM APARTMENT TYPE A  
PARTIAL SEA VIEW  
1 CAR PARKING  
GROSS AREA: 2162.73 SQFT



2 BEDROOM APARTMENT TYPE B  
PARTIAL SEA VIEW  
1 CAR PARKING  
GROSS AREA: 2108.85 SQFT



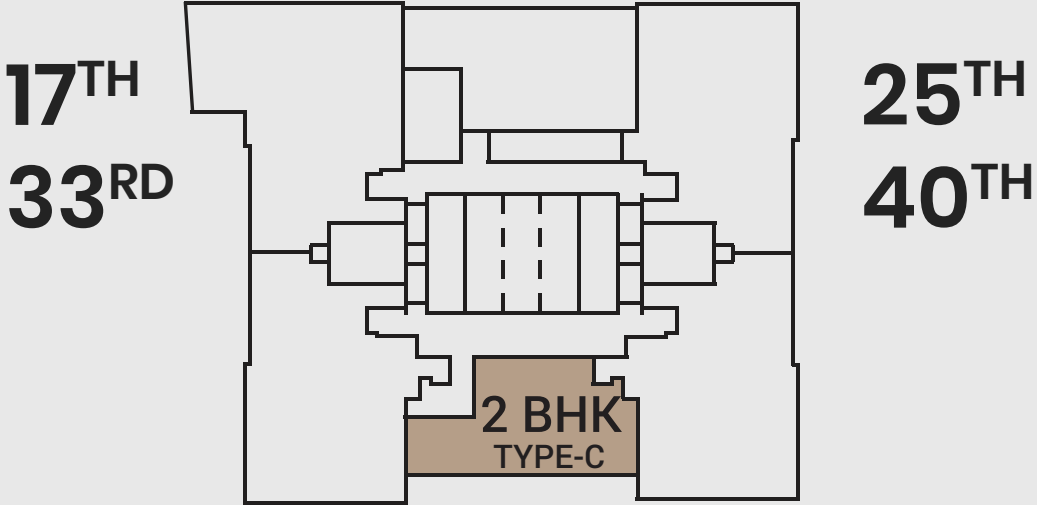


2 BEDROOM APARTMENT

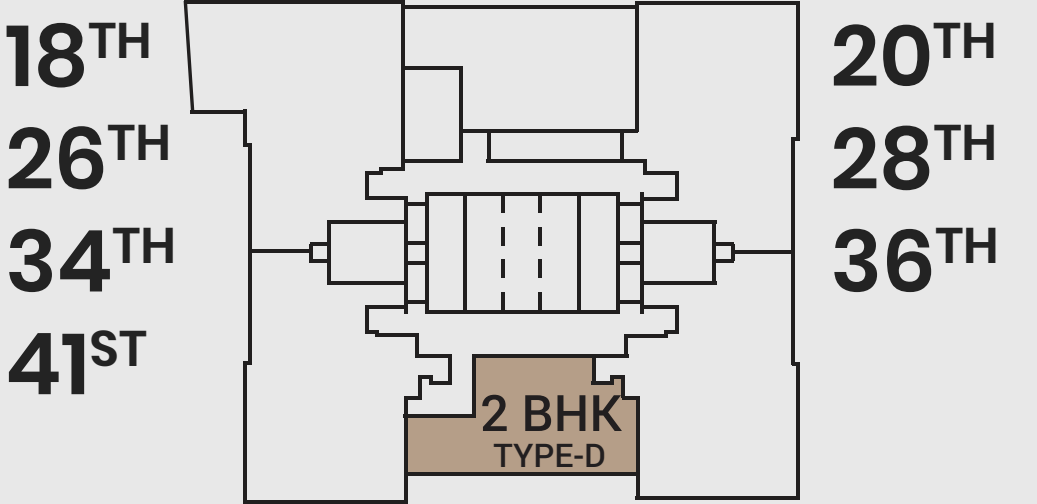
13<sup>TH</sup> TO 42<sup>ND</sup>



2 BEDROOM APARTMENT TYPE C  
PARTIAL SEA VIEW  
1 CAR PARKING  
GROSS AREA: 2409.99 SQFT

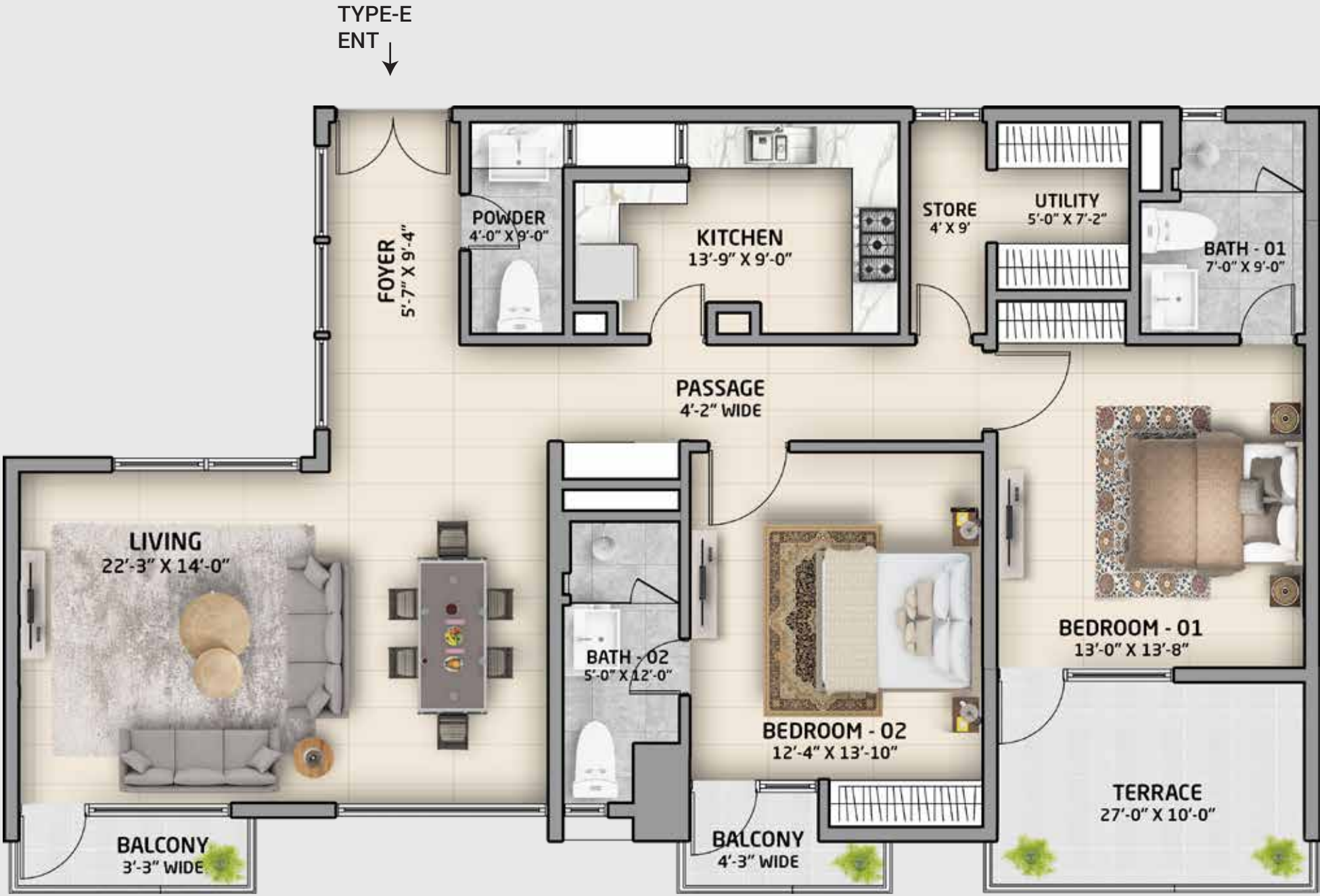


2 BEDROOM APARTMENT TYPE D  
PARTIAL SEA VIEW  
1 CAR PARKING  
GROSS AREA: 2241.46 SQFT

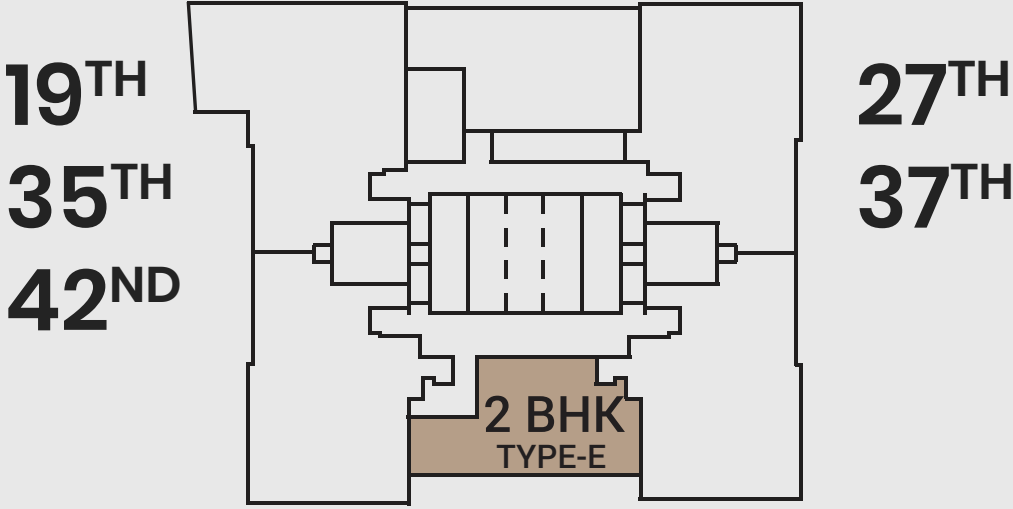




2 BEDROOM APARTMENT  
13<sup>TH</sup> TO 42<sup>ND</sup>



2 BEDROOM APARTMENT TYPE E  
PARTIAL SEA VIEW  
1 CAR PARKING  
GROSS AREA: 2095.04 SQFT

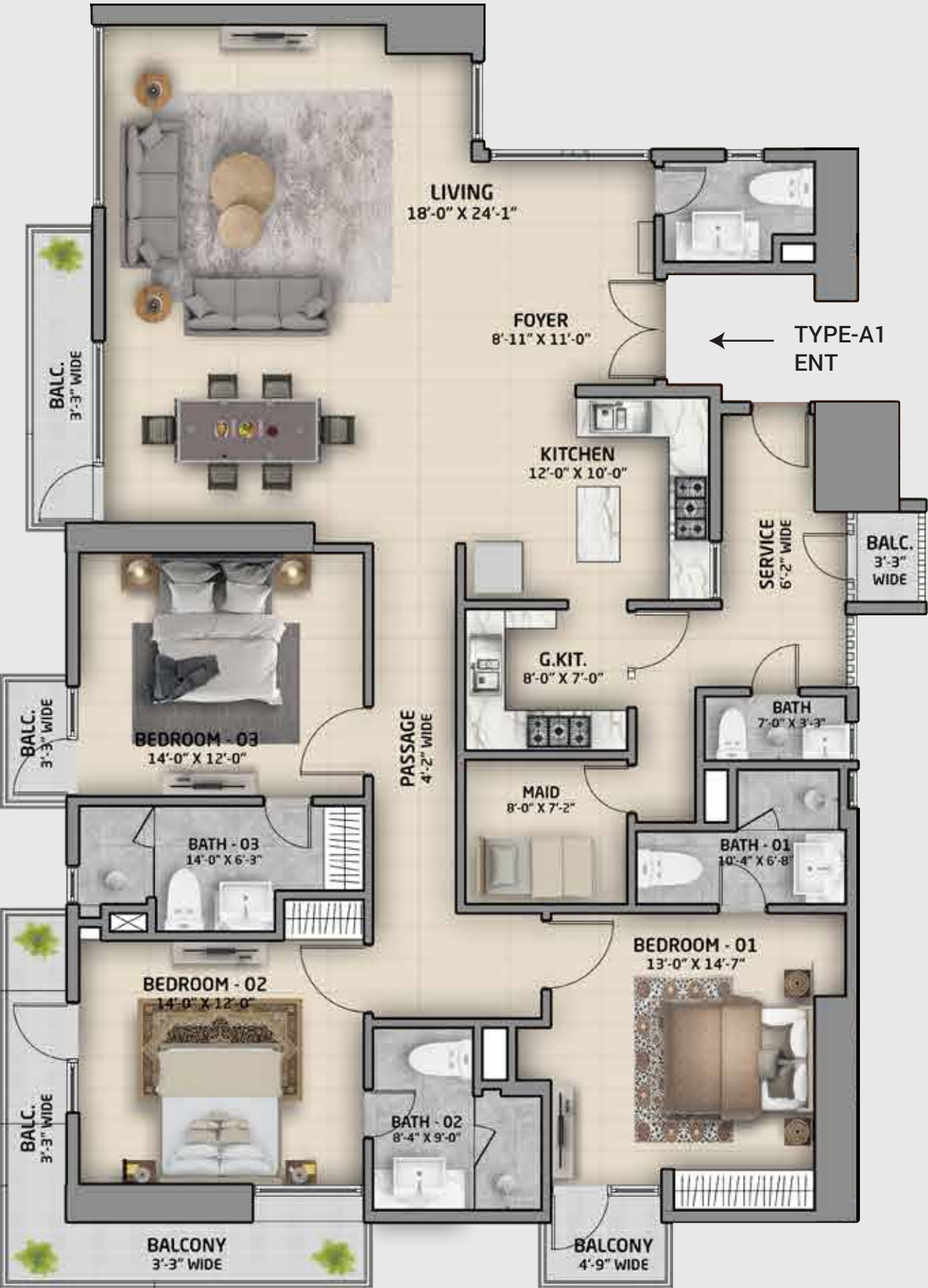
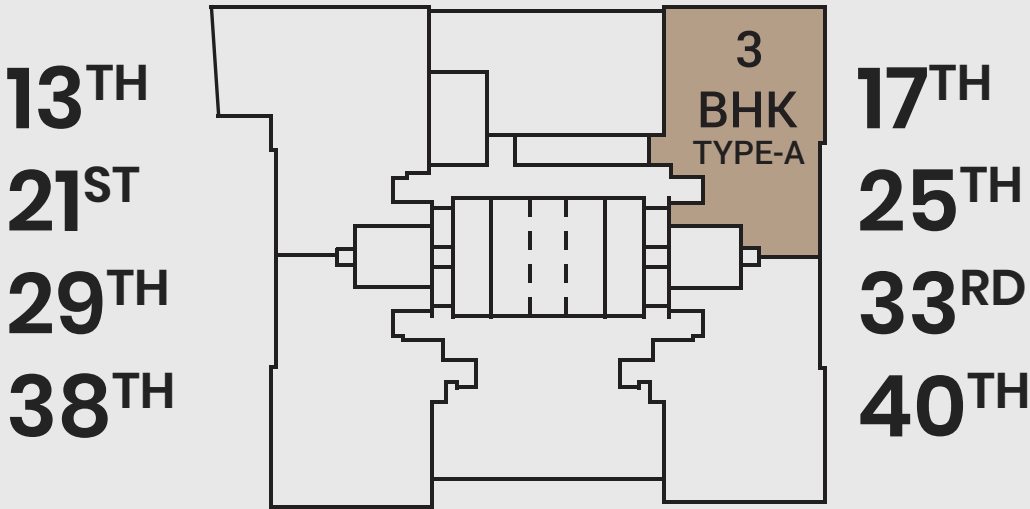




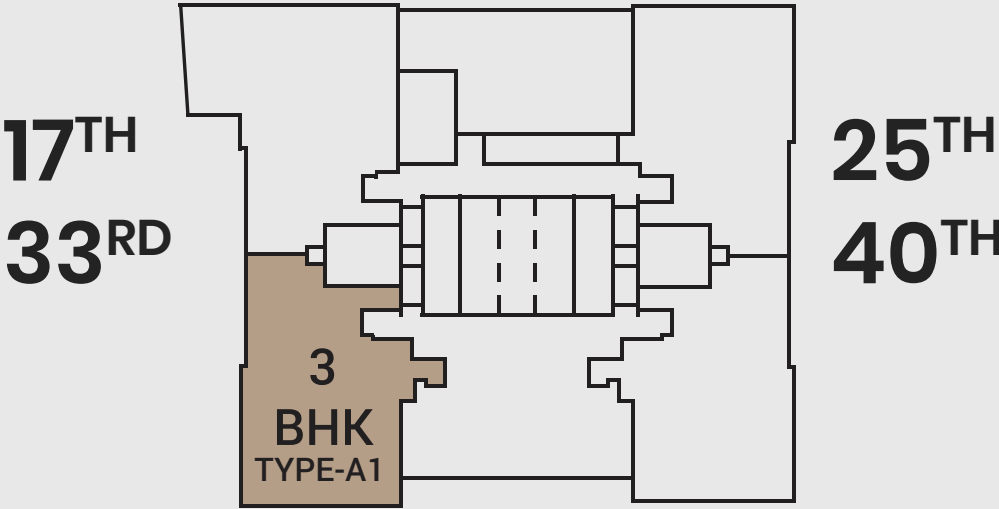
3 BEDROOM APARTMENT

13<sup>TH</sup> TO 42<sup>ND</sup>

3 BEDROOM APARTMENT TYPE A  
PARK FACING  
2 CAR PARKING  
GROSS AREA: 3351.60 SQFT



3 BEDROOM APARTMENT TYPE A-1  
SEA FACING  
2 CAR PARKING  
GROSS AREA: 3351.60 SQFT

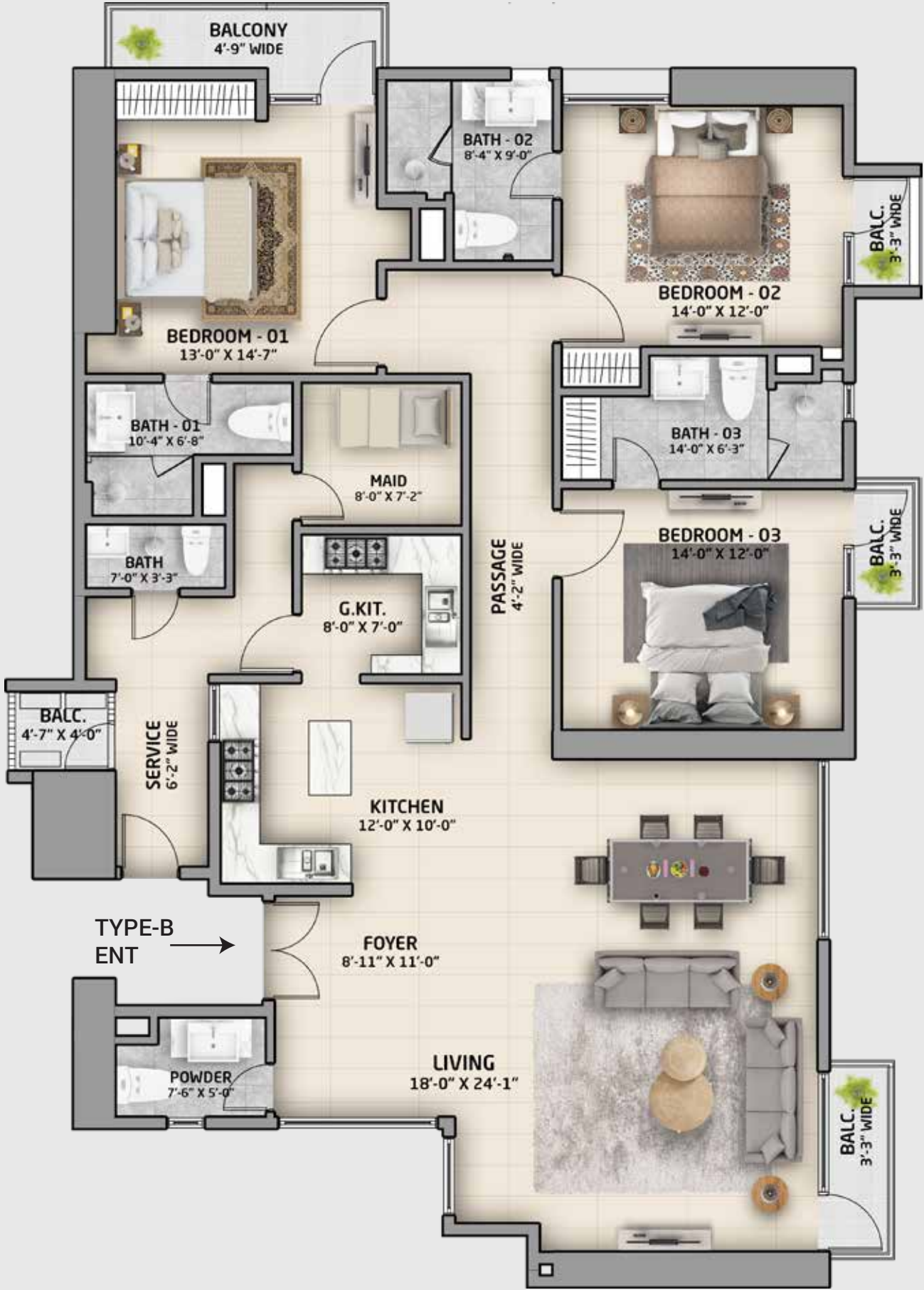




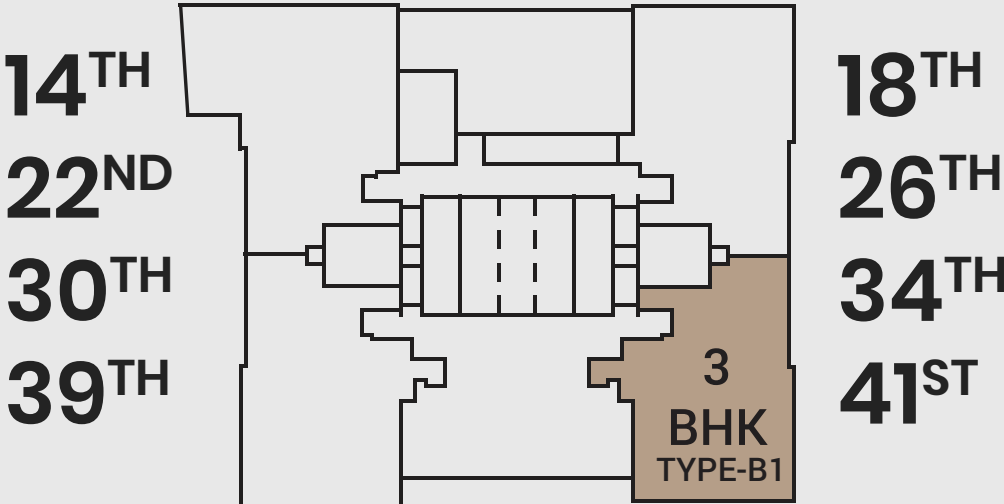
3 BEDROOM APARTMENT

13<sup>TH</sup> TO 42<sup>ND</sup>

3 BEDROOM APARTMENT TYPE B  
PARK FACING  
2 CAR PARKING  
GROSS AREA: 3232.81 SQFT



3 BEDROOM APARTMENT TYPE B1  
CORNER PARK FACING  
2 CAR PARKING  
GROSS AREA: 3254.91 SQFT

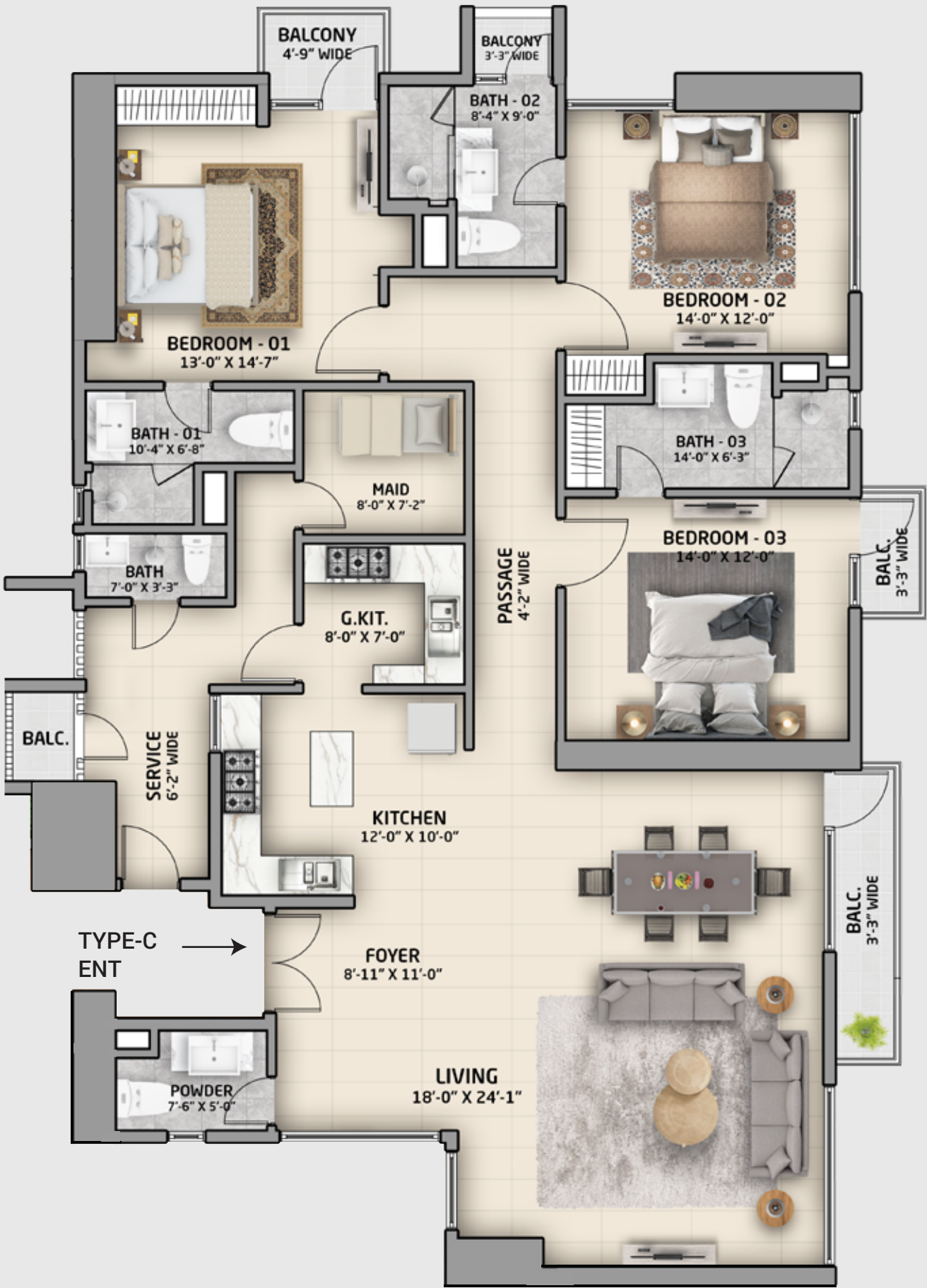
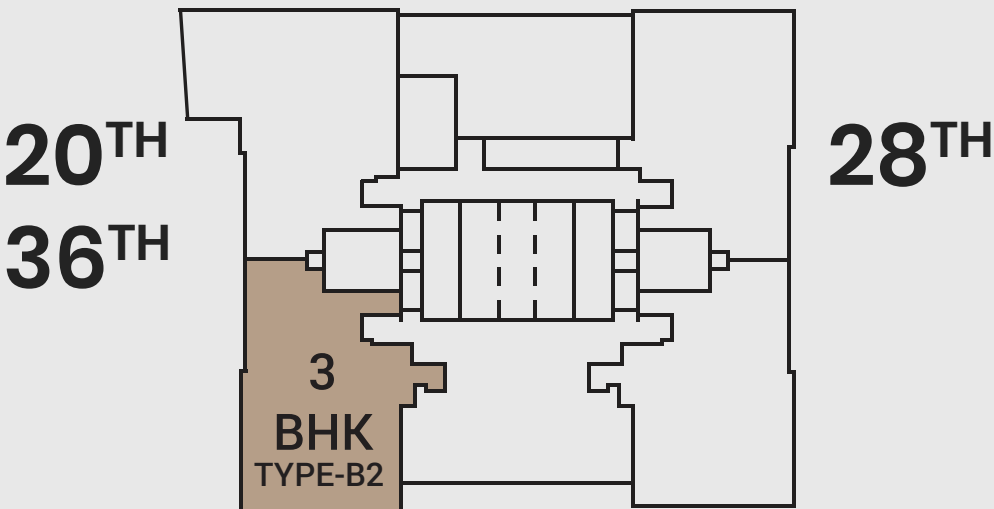




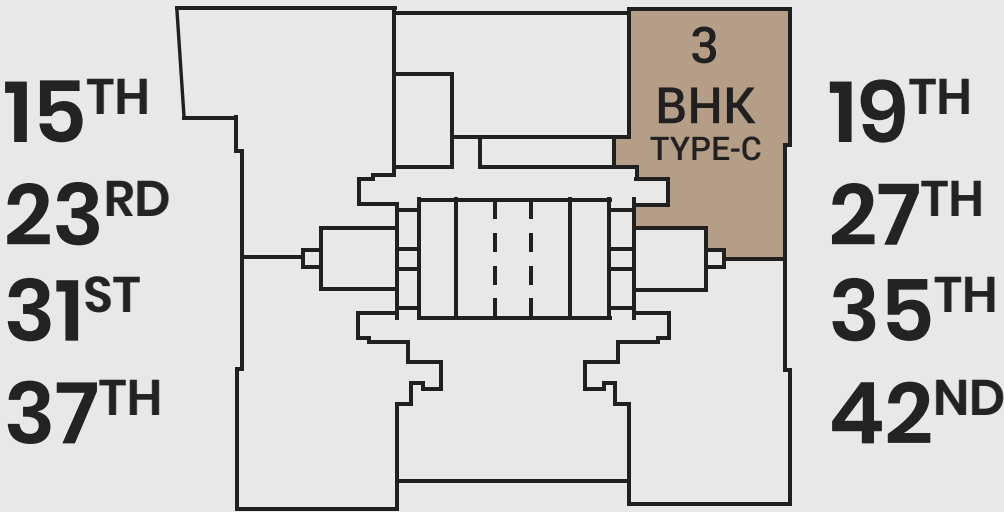
3 BEDROOM APARTMENT

13<sup>TH</sup> TO 42<sup>ND</sup>

3 BEDROOM APARTMENT TYPE B2  
SEA FACING  
2 CAR PARKING  
GROSS AREA: 3232.81 SQFT



3 BEDROOM APARTMENT TYPE C  
CORNER PARK FACING  
2 CAR PARKING  
GROSS AREA: 3214.85 SQFT





3 BEDROOM APARTMENT

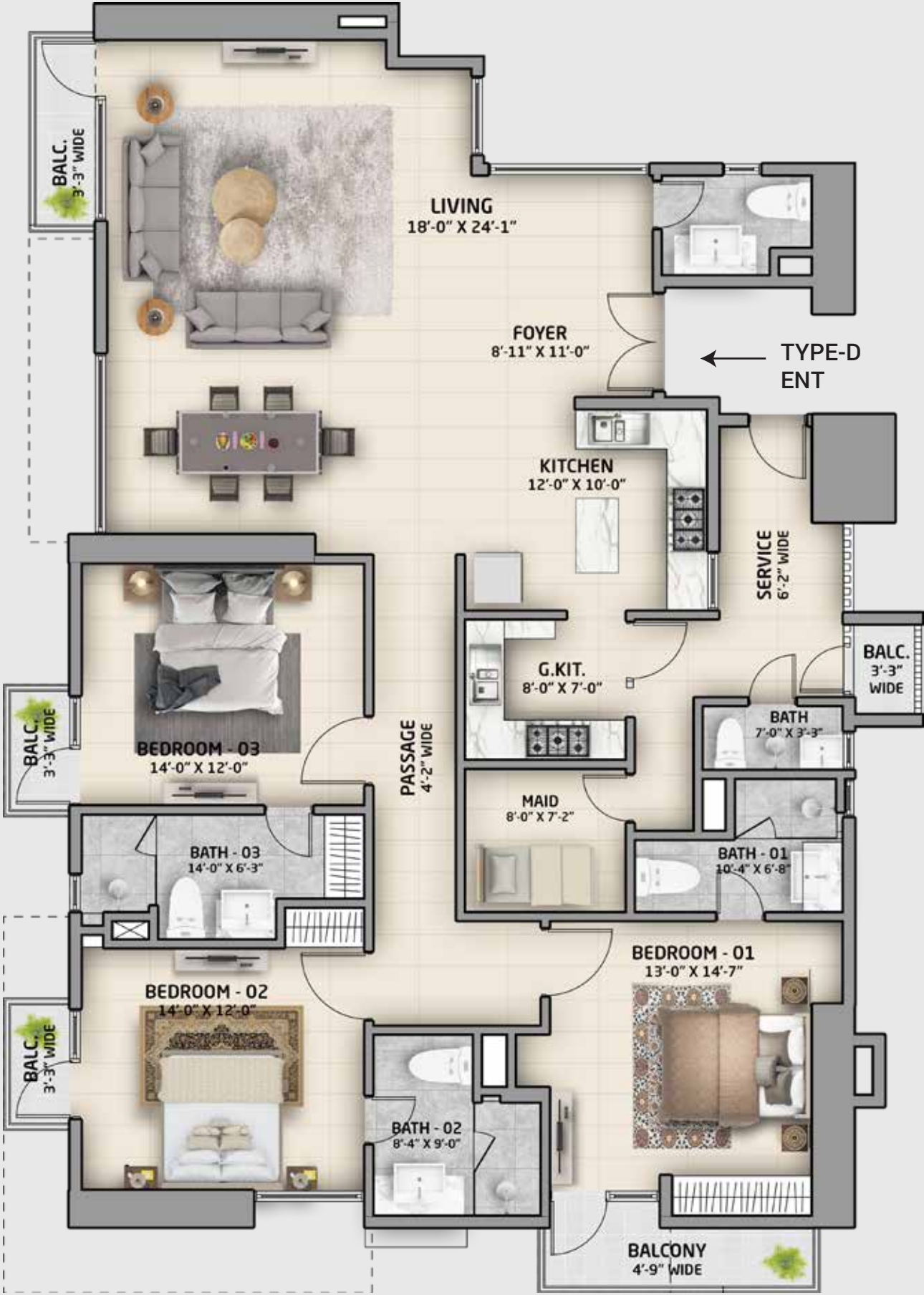
13<sup>TH</sup> TO 42<sup>ND</sup>

3 BEDROOM APARTMENT TYPE D  
SEA FACING  
2 CAR PARKING  
GROSS AREA: 3232.81 SQFT

16<sup>TH</sup>  
32<sup>ND</sup>

24<sup>TH</sup>

3  
BHK  
TYPE-D



3 BEDROOM APARTMENT TYPE E  
CORNER PARK FACING  
2 CAR PARKING  
GROSS AREA: 3277.01 SQFT

16<sup>TH</sup>  
24<sup>TH</sup>  
32<sup>ND</sup>

20<sup>TH</sup>  
28<sup>TH</sup>  
36<sup>TH</sup>

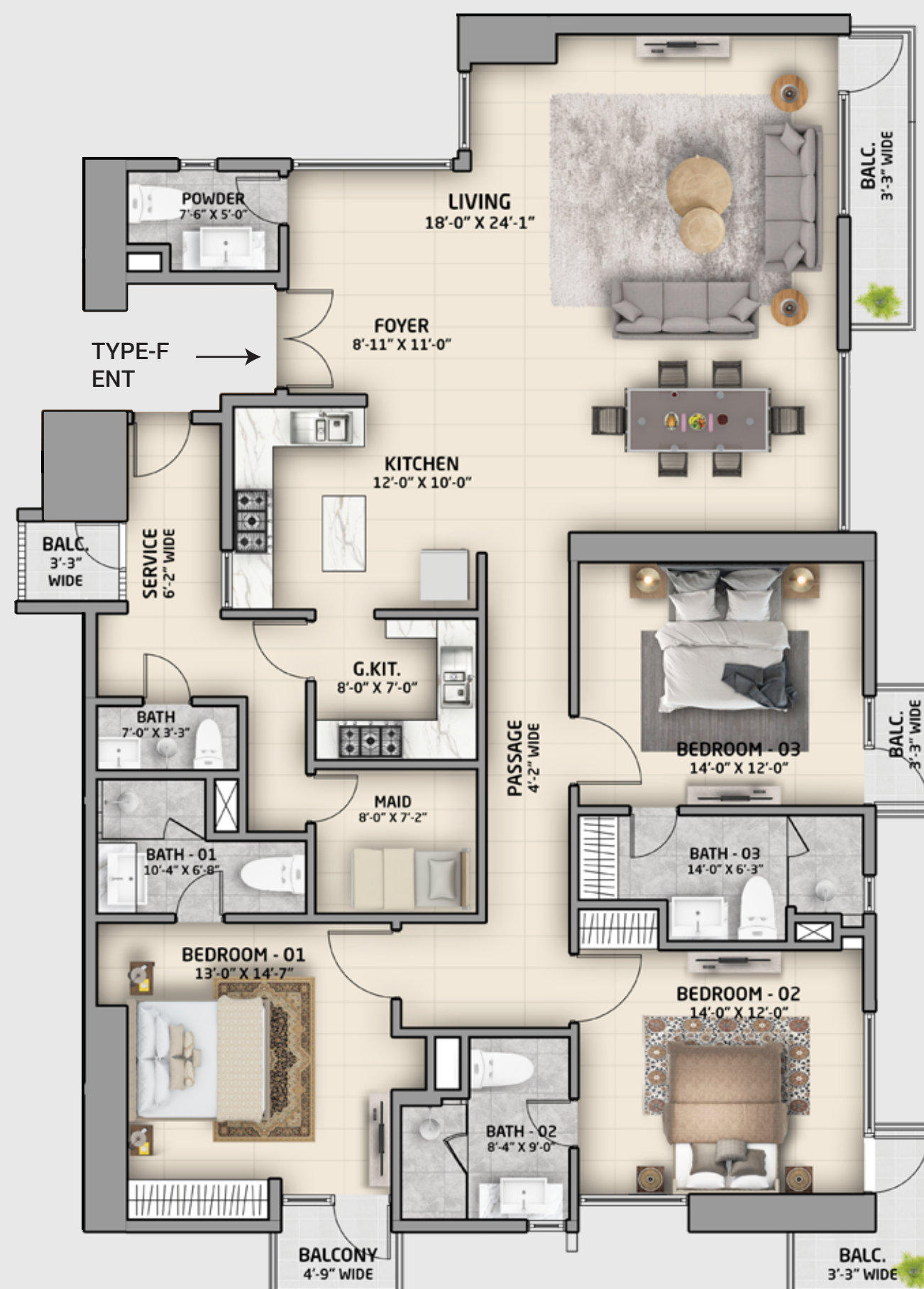
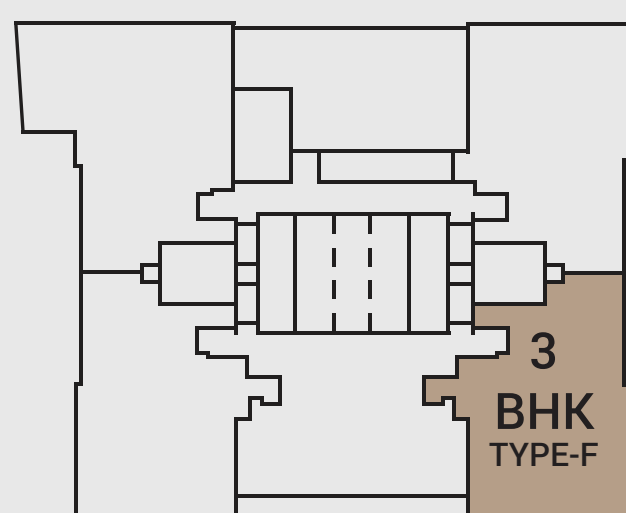
3  
BHK  
TYPE-E





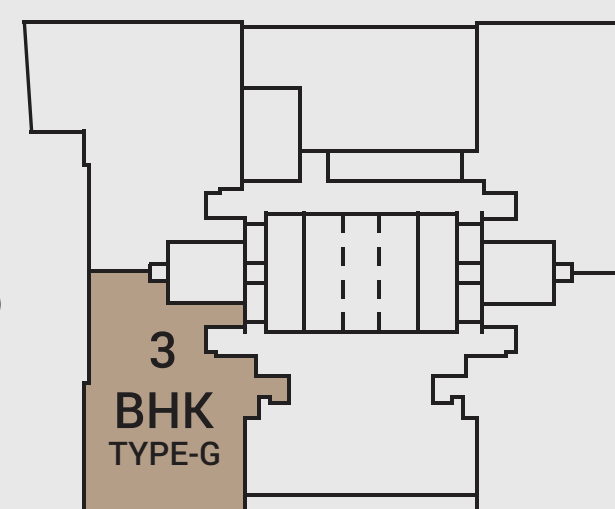
**3 BEDROOM APARTMENT TYPE F**  
**CORNER PARK FACING**  
**2 CAR PARKING**  
**GROSS AREA: 3249.38 SQFT**

19<sup>TH</sup>  
27<sup>TH</sup>  
35<sup>TH</sup>  
42<sup>ND</sup>



**3 BEDROOM APARTMENT TYPE G**  
**SEA FACING**  
**2 CAR PARKING**  
**GROSS AREA: 3192.75 SQFT**

27<sup>TH</sup>  
37<sup>TH</sup>

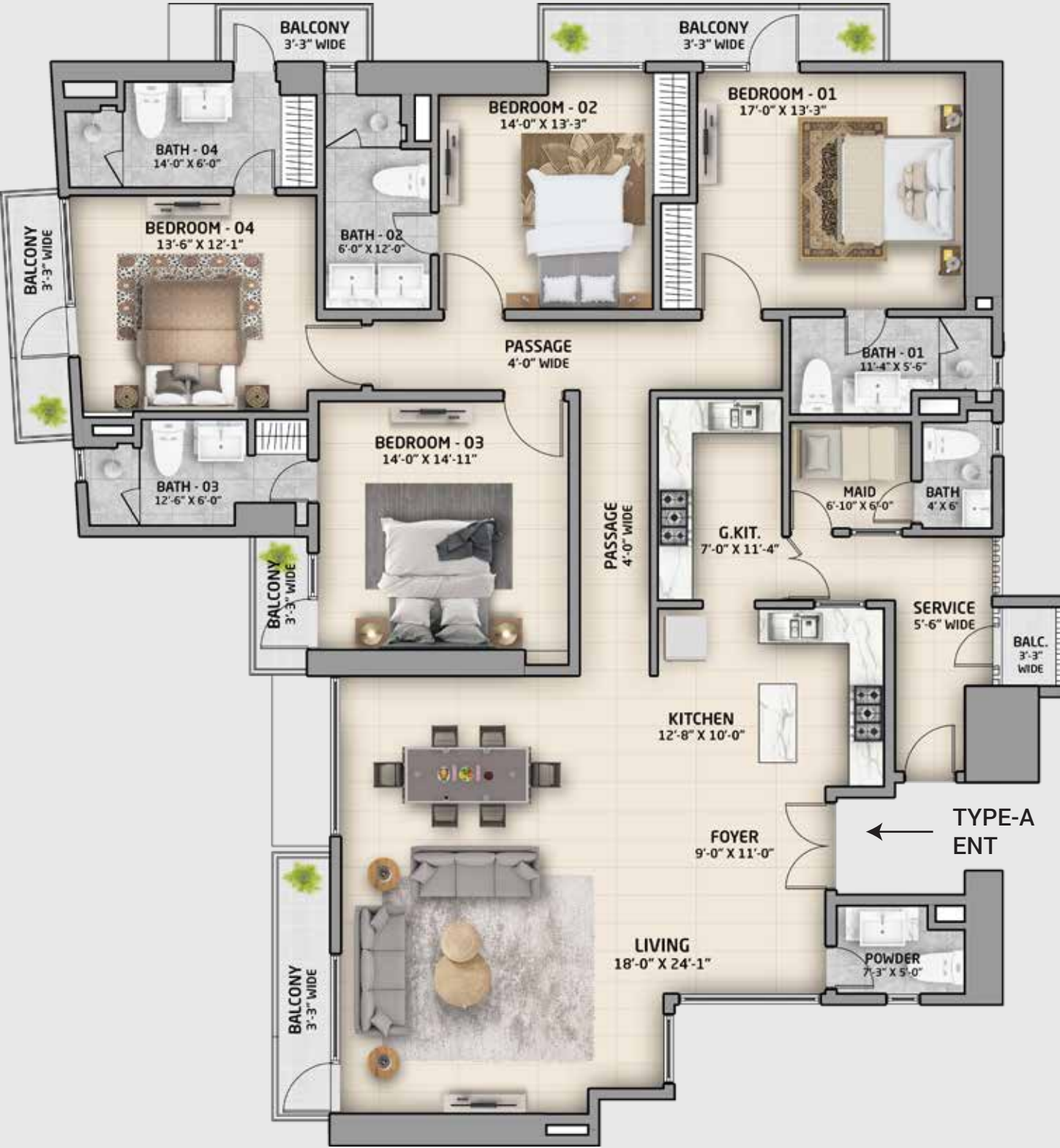
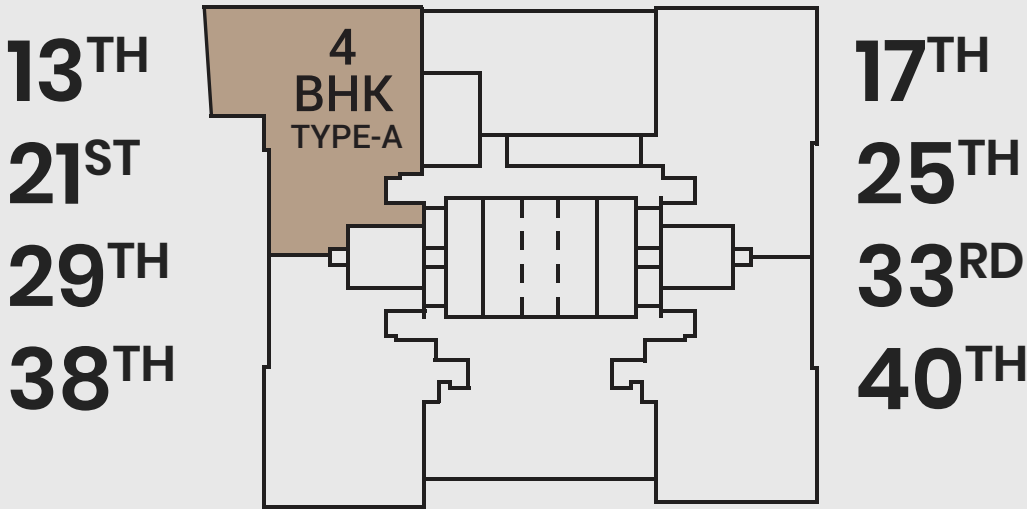




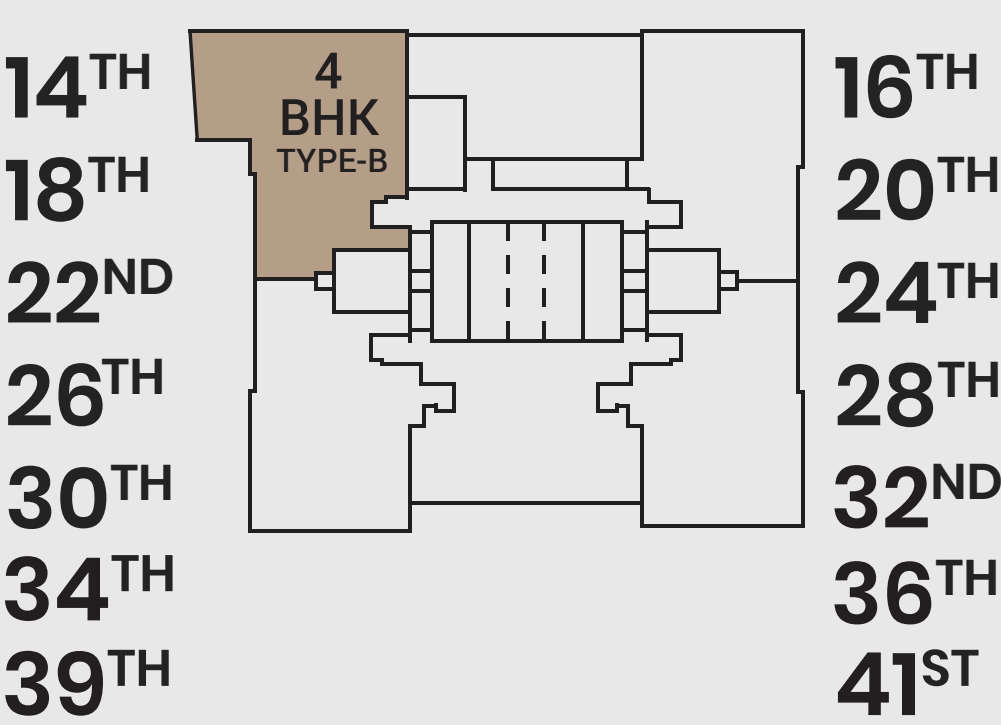
4 BEDROOM APARTMENT

13<sup>TH</sup> TO 42<sup>ND</sup>

4 BEDROOM APARTMENT TYPE A  
SEA FACING  
2 CAR PARKING  
GROSS AREA: 3883.42 SQFT



4 BEDROOM APARTMENT TYPE B  
SEA FACING  
2 CAR PARKING  
GROSS AREA: 3766.01 SQFT





4 BEDROOM APARTMENT

13<sup>TH</sup> TO 42<sup>ND</sup>

4 BEDROOM APARTMENT TYPE C

SEA FACING

2 CAR PARKING

GROSS AREA: 3761.86 SQFT

15<sup>TH</sup>

23<sup>RD</sup>

31<sup>ST</sup>

37<sup>TH</sup>

4 BHK

TYPE-C

19<sup>TH</sup>

27<sup>TH</sup>

35<sup>TH</sup>

42<sup>ND</sup>

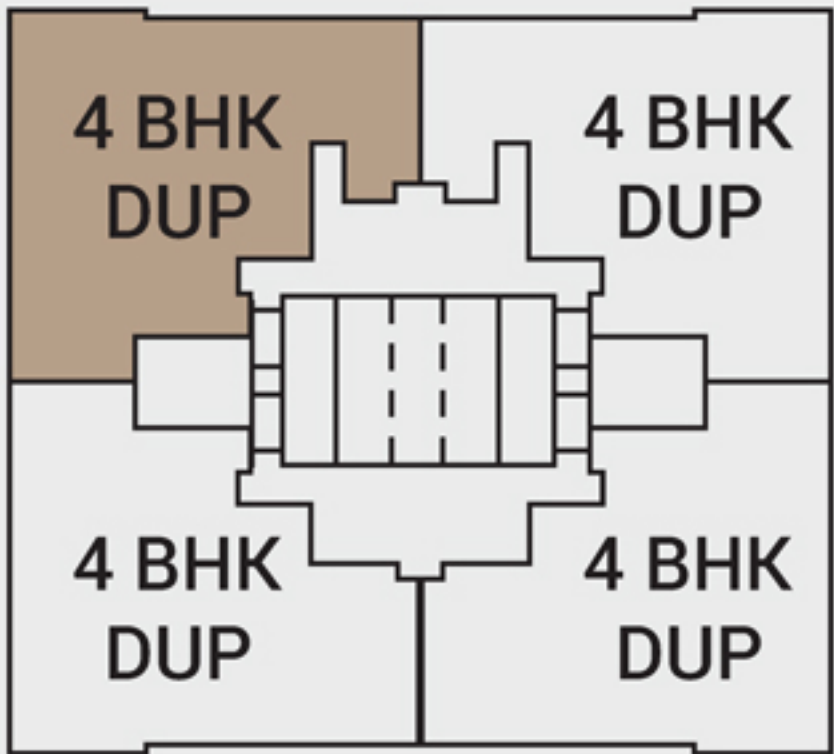
The floor plan illustrates a 4-bedroom apartment with the following layout and dimensions:

- Bedrooms:** Four bedrooms are distributed across the plan. Bedroom-01 (17'-0" x 13'-3") is located at the top right. Bedroom-02 (14'-0" x 13'-3") is at the top center. Bedroom-03 (14'-0" x 14'-11") is in the center. Bedroom-04 (13'-6" x 12'-1") is on the left side.
- Bathrooms:** There are four main bathrooms: Bath-01 (11'-4" x 5'-6"), Bath-02 (6'-0" x 12'-0"), Bath-03 (12'-6" x 6'-0"), and Bath-04 (14'-0" x 6'-0").
- Kitchen and Dining:** The kitchen (12'-8" x 10'-0") and a large living area (18'-0" x 24'-1") are situated at the bottom. A dining area with a table and chairs is adjacent to the living room.
- Other Rooms:** The plan includes a foyer (9'-0" x 11'-0"), a powder room (7'-3" x 5'-0"), a service area (5'-6" wide), a maid's room (6'-10" x 6'-0"), and a garage (4'-0" wide).
- Passages and Balconies:** Multiple passages (4'-0" wide) connect the rooms. There are several balconies, including a large one (3'-3" wide) at the bottom left and smaller ones (3'-3" wide) at the top and middle left.

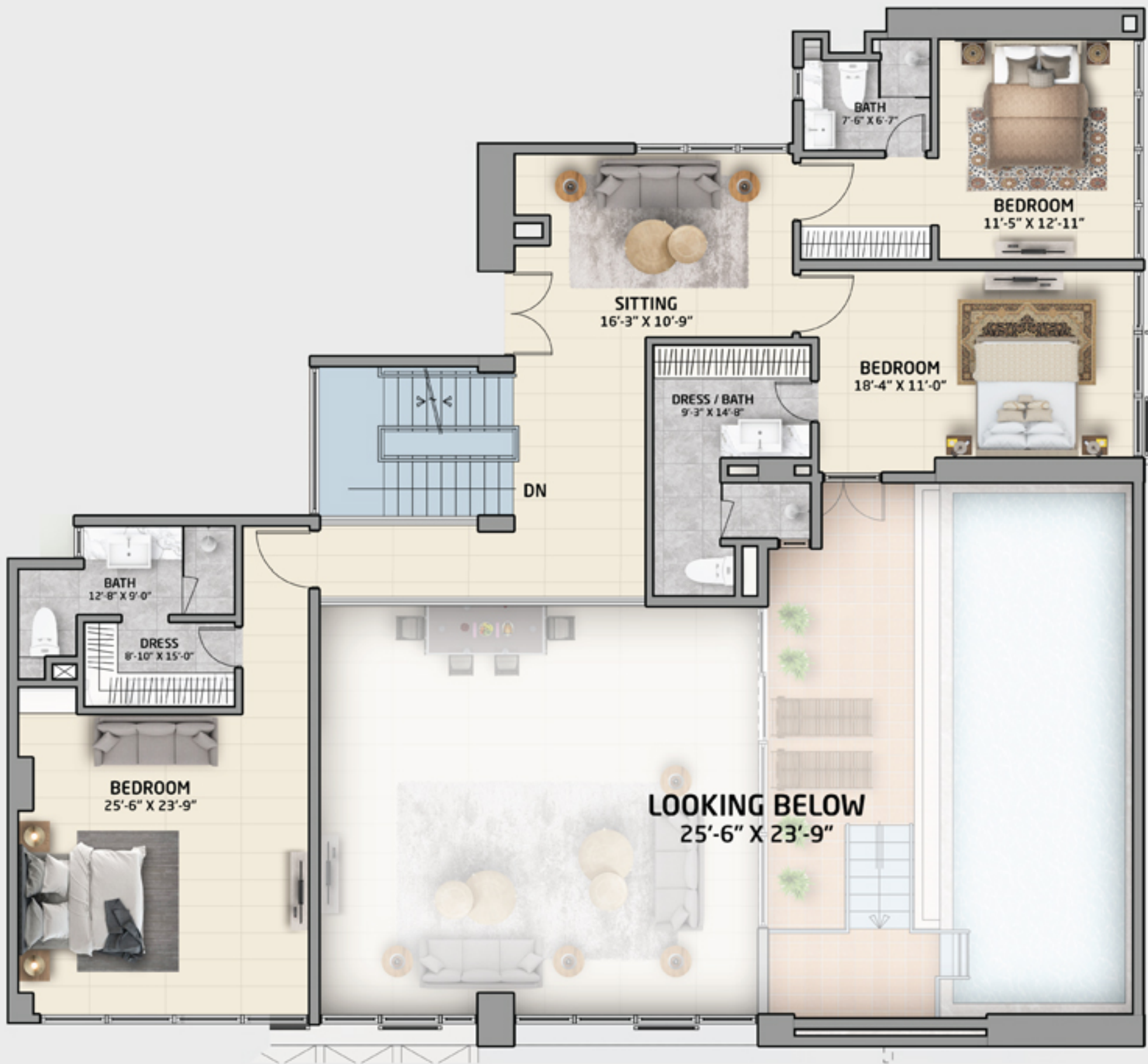


4 BEDROOM TRIPLEX  
43<sup>RD</sup> TO 51<sup>ST</sup>

TRIPLEX PENTHOUSE LEVEL 1  
SEA FACING  
4 CAR PARKING  
GROSS AREA: 10547.77 SQFT



TRIPLEX PENTHOUSE  
LEVEL 2



TRIPLEX PENTHOUSE  
ROOF FLOOR







**Head Office:** 43 / 1 / H Block-6, P.E.C.H.S Main Razi Road Karachi. | **Ph:** 021-34536424-30

**Site Office:** FL-10 Block-2, Clifton. | **Ph:** 021-34166344-45 | **Cell:** 0346 0330330

**Web:** [www.medicambuilder.com](http://www.medicambuilder.com) | **Email:** [info@medicambuilder.com](mailto:info@medicambuilder.com)

 [medicambuilder](#)  [medicambuilder](#)  [medicambuilder](#)